

Elite Steam Residential Steam Humidifiers

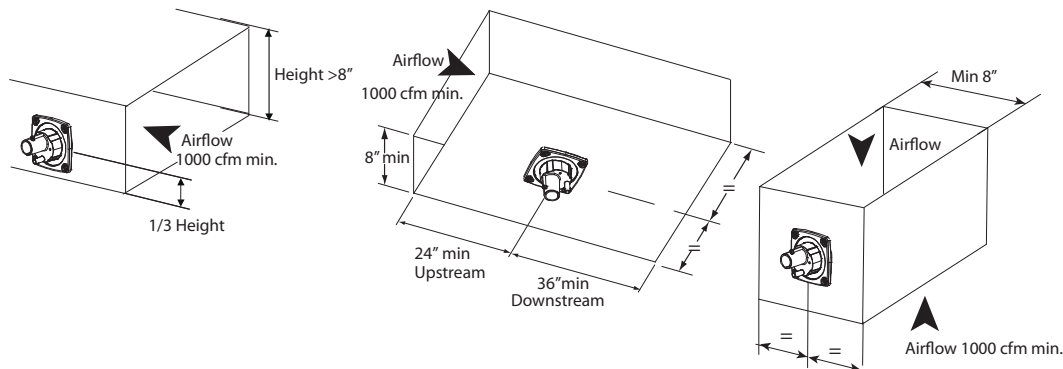
Duct Mount Kit Supplemental Instructions



! Please see the User Manual for the Elite Steam Humidifier for Complete Instructions !

1. Steam Nozzle Installation

Install the nozzle in the vertical side or bottom of a duct as shown. Air flow through the duct must be a minimum of 1,000 CFM, The duct must have a minimum width across from the nozzle of 8". Distance downstream to any elbow, filter, transition, take-off, zone damper, etc. must be at least 36". Distance upstream must be at least 24". Failure to follow these limitations will result in condensation in the duct and water damage.

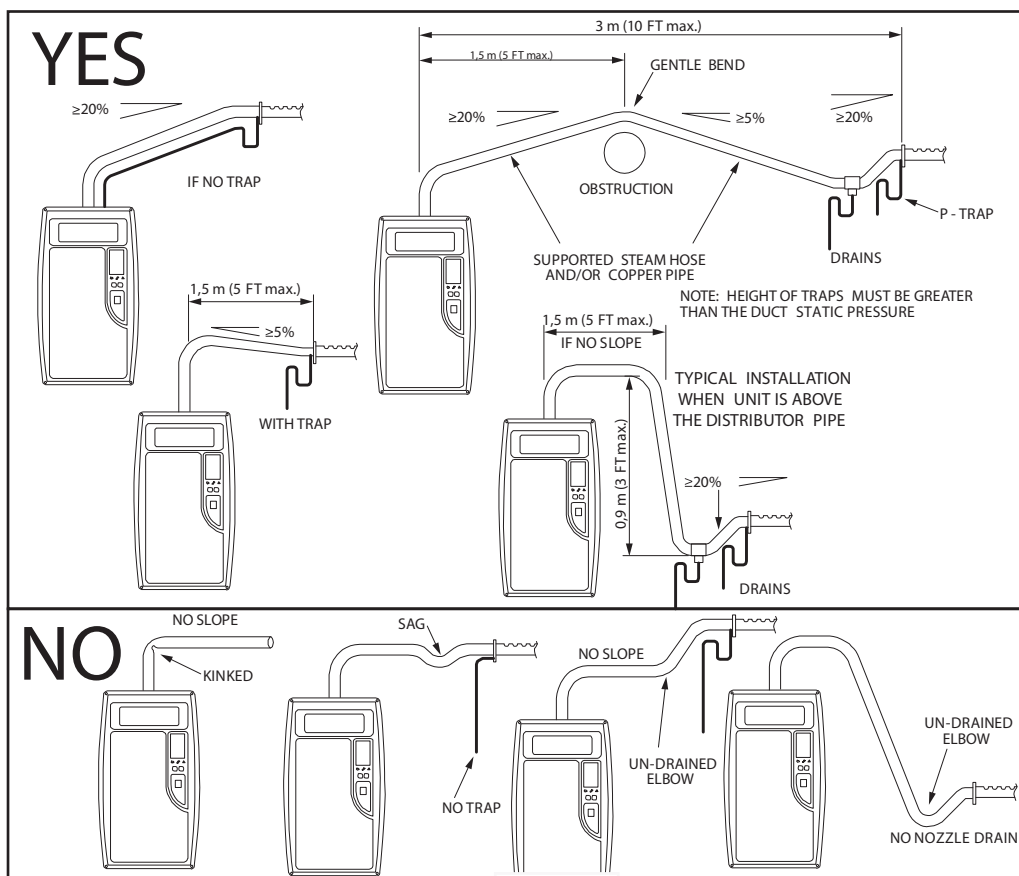


2. Steam Hose Routing

Route the steam hose with care. Slope hose up (in direction of steam flow) at 20%, 2 1/2" per foot or greater. Slope hose down at 5% or greater 3/4" per foot. Max length of rubber steam hose is 4m or 12ft. Insulated copper tubing may be used up to a length of 6m or 20ft. No sharp bends.

No sags without drains are permitted. Drain lowest point and install P-trap deeper than duct static pressure.

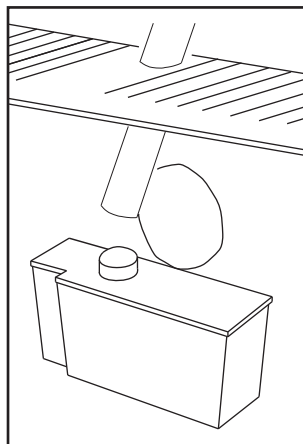
Secure to steam nozzle using hose clamp. Route through opening in humidifier cabinet. Secure to cylinder outlet using hose clamp. Do not overtighten or damage to the cylinder will result. Warranty does not cover crushed outlet fitting.



3. Condensate Hose Routing

Secure to drain on steam nozzle with clamp. Configure hose into one p-trap or loop deeper than duct static pressure to prevent steam from flowing back to humidifier.

Push condensate hose end into fill cup lid inside humidifier.



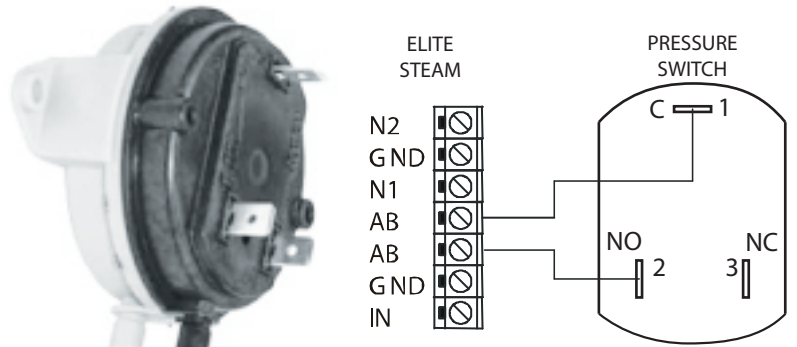
4. Air Pressure Switch Installation

Mount Air Flow Switch on a vertical surface. Switch must be oriented vertically. Do not mount switch on or in warm air plenum. Use care when drilling holes so as not to damage furnace electronics, fuel lines, combustion chamber, etc.

Mount plenum probes. Select locations on supply and return plenums so length of 8-foot supplied hose will be sufficient. Drill 1/4" hole and insert long end of probe into duct. Use two sheet metal screws to secure probe.

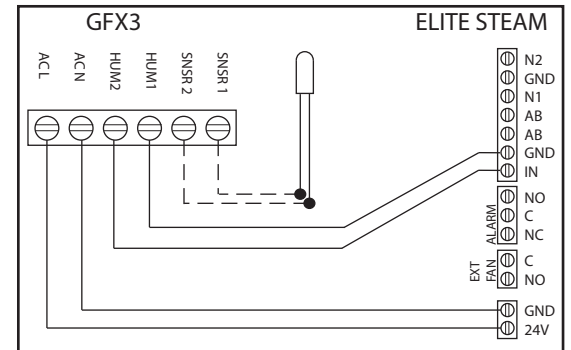
Trim hoses to length. Connect supply plenum to high pressure port (front-black "+P1). Connect return plenum to low pressure port (rear-grey "-P2).

Connect the Common terminal on the switch to one of the AB terminals in the Steam Humidifier. Connect the Normally Open to the other AB Terminal.



5. Humidistat

A humidity control must be used with the Elite Steam Humidifier. Connect GFX3 humidistat if included. Other humidistats may be used provided they contain a normally open set of contacts that close on falling humidity. The contacts are to be connected to the adjacent GND and IN terminals. Do not use the terminals GND and N1. The humidistat electronics may be powered using the 24V and GND Terminals. See Elite Steam User Manual and GFX3 User Manual for more details.



6. Test

Operate humidifier and check for proper installation. Check that pressure switch opens and humidifier stops when furnace fan is shut off. Check that humidistat control starts and stops humidifier accurately. Run humidifier and check for condensation in ductwork.

WARNING: Do not allow excess humidification. Excess humidity can cause condensation and enable mold and mildew growth.

! Please see the User Manual for the Elite Steam Humidifier for Complete Instructions !

GENERAL FILTERS, INC.
43800 GRAND RIVER AVE.
NOVI, MICHIGAN 48375-1115
WWW.GENERALAIR.COM
TEL 248-476-5100

CANADIAN GENERAL FILTERS, LTD.
400 MIDWEST ROAD
TORONTO, ONTARIO M1P3A9
CANADA
WWW.CGFPRODUCTS.COM
TEL 416-757-3691

